



Ewell Grove Newsletter

Respect, Teamwork, Determination, Courage, Equality, Excellence, Inspiration

Thank you to the Nursery Team and children for their super mini Ewell Grove Games! I know you all had lots of fun! Although the weather was unpredictable you didn't let it stop you. The children showed fantastic enthusiasm, courage and teamwork throughout, making it a memorable event for everyone! The scores will be revealed next Friday during our Ewell Grove Games event at the Harrier Centre. Some final reminders for the day will be sent out on Monday 8th June 2026.

Be brave and be ready for your next adventure!

On Monday 8th June 2026, we will be welcoming our new families to Ewell Grove during our Nursery and Reception Information Evening. Following this event on Tuesday 9th June, we will be sharing with the children who their teachers will be next year. This will give the children and teachers the opportunity to get to know one another throughout the remainder of the Summer term and help ensure a smooth transition into the new academic year. Teachers will also be working together during the next few weeks to share information about the children in preparation for next year.

Please continue to speak positively about the exciting changes ahead and encourage your child to look forward to the opportunities that next year will bring. Thank you for your continued support.

Governor Monitoring

This week, we had a very positive meeting with our school governors as part of our termly monitoring of the School Development Plan. On this occasion we focussed on our PSHE curriculum, including Online Safety and how we are preparing the children for life in modern Britain. We were delighted to share the fantastic work our subject leaders and teachers have been doing to promote our school values across the curriculum. This has included developing and deepening the children's understanding of the Fundamental British Values (FBV), helping them to become respectful, responsible and active members of their community.



Miss Paula Rising



Useful Online Website Links



[School Calendar](#)



[Parents Information Booklet](#)



[Change of Contact Details](#)



[Exceptional Leave of Absence Form](#)



[Pupil Medication Request](#)

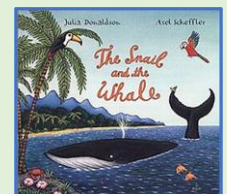
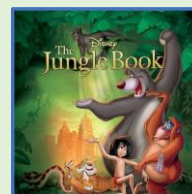


[Photographic Images / Names Consent Form](#)



A Love of Reading

This week Mr Johnstone, our Facilities Officer, has recommended two stories you may like to share at home.



The first book I loved reading as a child was the 'Jungle Book' by author Rudyard Kipling. I loved the setting of the book and the relationship between Mowgli and the animals in the jungle who helped protect him from the other various lawless animals.

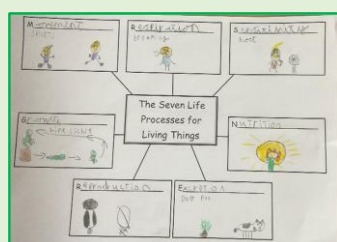
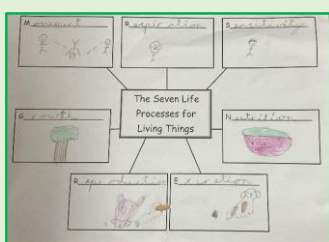
The second book, which I enjoyed reading to my son, was 'The Snail and the Whale' by Julia Donaldson. The tale describes how even the smallest snail is able to look after the biggest creature, the whale, and how anyone is able to make a difference. We also especially loved the build-up tempo of the writing which kept us both on the edge of our seats until the end of the book!

Subject of the Week – Science

This half term in Year 2 we are looking at living things and their habitats. We have been learning about the seven life processes that all living things carry out and have talked through what each one means and their importance.

The children have been introduced to the acronym MRS GREN which helps them to remember what those life processes are.

- M** - Movement
- R** - Respiration
- S** - Sensitivity
- G** - Growth
- R** - Reproduction
- E** - Excretion
- N** - Nutrition



Key Stage Parent Meetings

EYFS – Nursery and Reception	Wednesday 17 th June 9:00 am
KS1 – Year 1 and 2	Tuesday 16 th June 9:00 am
KS2 – 3, 4 and 5	Monday 15 th June 9:00 am
Year 6	Monday 8 th June 2:30 pm



Ewell Grove Games

We are looking for some volunteers who would be able to assist with setting up the Ewell Grove Games on Friday 12th June from 7:00am at the Harrier Centre. This will mainly involve putting up gazebos/event shelters.

If you are able to help, please can you email the school office – office.ewellgrove@lumenlearningtrust.co.uk

Trading / Pokémon Cards

Please can we ask all parents / carers to keep any trading cards at home and not allow your children to bring them into school. This will prevent the distraction in class and will avoid the cards getting lost. Thank you.

Reminder

Online Safety Parent Workshop

Keeping up with the fast-changing online world our children interact with can feel overwhelming, as new apps, games, and platforms appear so quickly.

On **Monday 8th June** at **9:00am**, we are offering parents and carers a practical and reassuring session designed to help better understand the digital spaces children use every day.

We will explore the key online safety risks families should be aware of, offer guidance on setting up parental controls, and explain how artificial intelligence is increasingly built into the apps, games, and platforms children use. It will also focus on the importance of open communication, sharing simple strategies for starting positive conversations at home and supporting children to make safe, informed choices online.

This meeting will be held in the school hall and online. If you would like to attend this meeting in person or online, please can you complete the [online Google form](#).

The link to attend this meeting online via Google Classroom will be sent to all parents on **Monday 8th June** at **8:30am**.

Phonics Screening Check

Next week, our Year 1 children will be taking part in the national Phonics Screening Check. This is a short assessment that helps teachers measure how well children can use their phonics skills to read words. The check is carried out in a relaxed environment with a familiar adult and is designed to celebrate the progress children have made in their reading journey.

We are incredibly proud of the hard work and enthusiasm the children have shown during their phonics lessons this year. Thank you to all parents and carers for your continued support with reading and phonics practice at home.



Dear Parents & Carers,

Following a rigorous and highly competitive recruitment process, we are delighted to announce the appointment of **Sarah Kober** as the new Chief Executive Officer of Lumen Learning Trust.

As a Board, our priority was to find an exceptional leader who embodies our values, understands the unique needs of our primary schools and possesses the vision to drive our next chapter of growth. After an intensive series of interviews and presentations, Ms. Kober emerged as the outstanding candidate to lead our Trust forward.

Ms. Kober will already be familiar to many of you having dedicated 18 years of service to our Trust in various leadership roles. She has taught at Saxon Primary School and served as Headteacher at The Echelford Primary School and Darley Dene Primary School.

Her success against a strong field of external applicants is a testament to her exceptional leadership skills, deep expertise in primary education and unwavering commitment to our pupils and staff.

She will officially step into the role of CEO on January 1st 2027 but prior to that will be working alongside our current CEO, Mary Ellen McCarthy until her retirement in December 2026, ensuring a seamless transition and continuity for our schools, children and communities.

Please join us in offering our warmest congratulations to Ms. Kober on her well-deserved appointment.

Kind regards,

Jo Roberts

Chair of Directors

Lumen Learning Trust

Friends of Ewell Grove Events

June

Wednesday 10 th June	➤ Non-Uniform Day – bottle tombola donations
Week commencing Monday 22 nd June	➤ Donation week for the Summer Fair (soft toys, games, puzzles and books)
Thursday 25 th June	➤ Junior Quiz (Years 5 & 6) from 3:30pm (details to follow – ticketed event) ➤ The Little Recyclers collection – 6:30pm – 8:00pm
Friday 26 th June	➤ The Little Recyclers collection – 8:45am – 9:00am ➤ Year 6 Cake sale donations delivered to school ➤ Summer Fair preparation evening from 7:00pm – volunteers needed!
Saturday 27 th June	Ewell Grove Summer Fair - 11:30am – 3:30pm ➤ SEN Families - 11:30am – 12:30pm ➤ All families welcome - 12:30pm – 3:30pm

July

Tuesday 7 th July	FOEG AGM at Ewell Grove – 9:00am – all welcome!
------------------------------	---

Summer holidays – Year 6 leavers (uniform donations) location (to be confirmed)

FOR YOUR INFORMATION

☀️ NEW FOR EWELL GROVE SCHOOL - SUMMER 2026! ☀️

CLUB VALE SUMMER HOLIDAY CLUB Fun • Friends • Adventures • Creativity

📍 **The Orchard Room, Ewell Grove School**

📅 **Dates:** 20th - 24th July & 27th – 31st July 2026

🕒 **Session Times:**

- **Full Day:** 8:15 AM – 5:30 PM £40.00 (sibling discount available)
- **Standard Day:** 10:00 AM – 4:00 PM £28.00 (sibling discount available)

👧👦 **School Years:** Current Reception – Year 6

🌈 **All children from all schools welcome – so tell your friends!**

🎨 **Activities Include:** Arts & Crafts Sports & Games Dance & Music Baking Sessions Outdoor Adventures

🍎 **What's Included?**

- ✓ Healthy snacks & light tea at 4pm, for those staying till 5.30pm
- ✓ Experienced staff
- ✓ Supported and friendly play space with familiar faces!
- ✓ New activities every day
- ✓ lots of outside space for fun and games,

Please note due to the outside space area we cannot offer football

Spaces may go fast, so lock in your spot today!

For any other contact or any further bookings please call Club Vale number 07905 394029 or email us at clubvale@hotmail.co.uk

Book Your Place Today!

[CLICK HERE TO BOOK](#)

MEGA CAMPS
KIDS DAY ACTIVITY CAMPS
AGES 4-14
CHILD CARE FROM 8am - 6pm

SUMMER CAMPS 2026

CHECK WEBSITE FOR EARLY BIRD OFFERS AND MORE INFORMATION
SUMMER PAYMENT PLANS AVAILABLE

KIDS FAVOURITE
WALL CLIMBING
ANIMAL WORKSHOP
MEGA ACTIVITY
WET 'N' WILD
PLUS MUCH MORE...

DIFFERENT MEGA ACTIVITIES, ARTS & CRAFTS AND SPORTS AVAILABLE EACH DAY

MULTIPLE LOCATIONS THROUGHOUT ESSEX, KENT & SURREY

BOOK ONLINE NOW!
WWW.MEGACAMPS.NET
OR CALL 0333 012 4376

Hello there!

Glyn School Open Evening
Thursday 9 July 2026
4.30pm-7.30pm

Dear Pupils,

We would like to invite you and your family to our Open Evening on Thursday 9 July 2026 from 4.30pm - 7.30pm.

There will be talks about the school at 4.45pm, 5.45pm & 6.45pm. Even more excitingly, our current younger students will be on hand to take you and your family on a tour of the school.

We hope you are able to join us.

Glyn School, The Kingsway, Ewell, Epsom, Surrey, K11 7 1NS
020 8714 6249
www.glynschool.org

FACE **June 2026 Timetable**

All regular sessions delivered live online via zoom. 90 minutes long
£24 each or FREE with School Membership
Book online at facefamilyadvice.co.uk
Recordings available for 48 hours

Understanding Anger	1 June 10am
School Anxiety	1 June 7pm
Facing Defiance	2 June 10am
Supporting Healthy Screen Use	2 June 7pm
Anxiety Explained	8 June 10am
Cannabis & Ketamine Awareness	8 June 7pm
Introduction to OCD	9 June 10am
What is ACT?	9 June 7pm
Decreasing Depression	15 June 10am
Raising Self-Esteem	15 June 7pm
Understanding the Teenage Brain	16 June 10am
Supporting Healthy Sleep	16 June 7pm
Improving Family Communication	22 June 10am
Autism-Improving Communication	22 June 7pm
Supporting a Child with ADHD	23 June 10am
Understanding Addictive Behaviour	23 June 7pm
ADHD and Homework	25 June 7-8pm