



Swan Class

After the summer holidays, you will be in Swan Class.

Your teacher is called Miss Feldmanis.



These adults will be helping you in Swan Class.



Miss Ebbs



Mrs Koupepides

You will be in one of these colour groups.



yellow



red



green



blue

This is the building your new classroom is in.

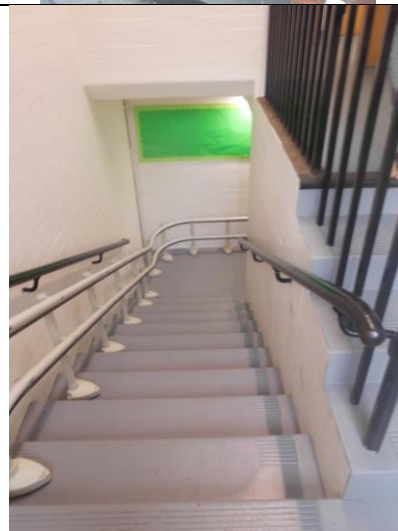


Every morning, you will enter through the Orchard Room Gate (old Nursery Gate on 'The Grove').

You will also leave the school through this door to be collected by an adult.



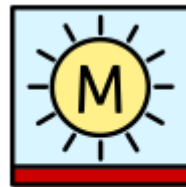
Swan Class is upstairs.



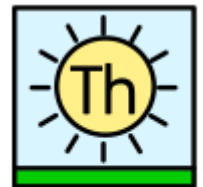
This is Swan Class.



On a **Monday** and a **Thursday**, you will need to bring your **Rucksack** to school to change your books.



Monday



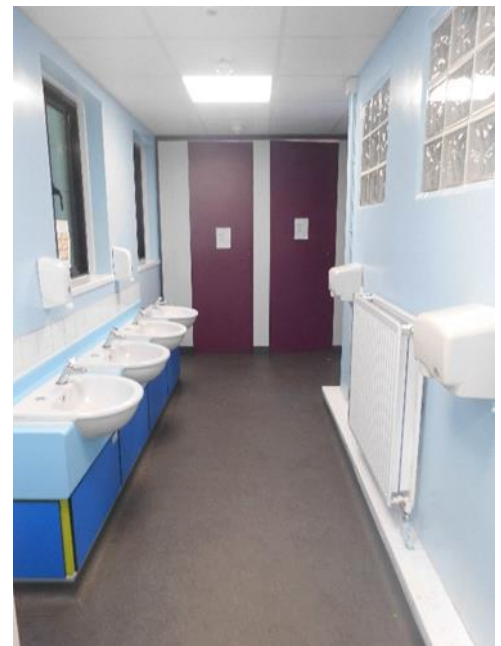
Thursday



Please wear your KS2 school uniform - with your tie - and wear either plain black trainers or black school shoes to school.



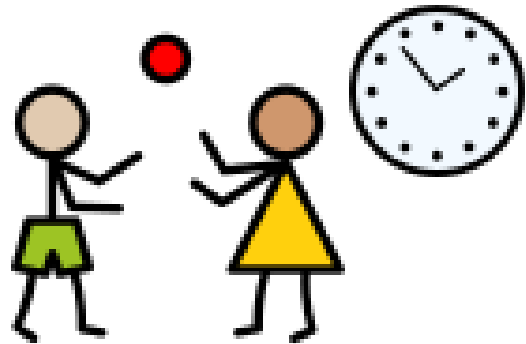
These are the Year 3 and 4 toilets. Remember you must try and go to the toilet at playtimes and lunchtimes or ask an adult when you are in the classroom.



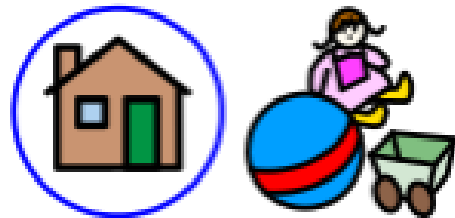
You can decide whether to have a hot school dinner, or bring your own packed lunch.



Playtimes will be on the playground.



Toys will need to either stay at home.



You will be in Swan Class with Miss Feldmanis. We are all looking forward to seeing you in September!

